

D500

WIRELESS

Laser Mouse

QUICK GUIDE

FCC Statement

This equipment has been tested and found to comply with the limits for a Class B digital device, pursuant to Part 15 of the FCC Rules. These limits are designed to provide reasonable protection against harmful interference in a residential installation. This equipment generates uses and can radiate radio frequency energy and, if not installed and used in accordance with the instructions, may cause harmful interference to radio communications. However, there is no guarantee that interference will not occur in a particular installation. If this equipment does cause harmful interference to radio or television reception, which can be determined by turning the equipment off and on, the user is encouraged to try to correct the interference by one of the following measures:

- Reorient or relocate the receiving antenna.
- Increase the separation between the equipment and receiver.
- Connect the equipment into an outlet on a circuit different from that to which the receiver is connected.
- Consult the dealer or an experienced radio/TV technician for help.

FCC Caution: Any changes or modifications not expressly approved by the party responsible for compliance could void the user's authority to operate this equipment.

IMPORTANT NOTE:

FCC Radiation Exposure Statement:

This equipment complies with FCC radiation exposure limits set forth for an uncontrolled environment. This equipment should be installed and operated with minimum distance 20cm between the radiator & your body.

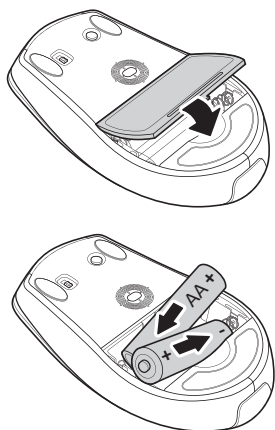
This transmitter must not be co-located or operating in conjunction with any other antenna or transmitter.

This device complies with Part 15 of the FCC Rules. Operation is subject to the following two conditions: (1) This device may not cause harmful interference, and (2) this device must accept any interference received, including interference that may cause undesired operation.

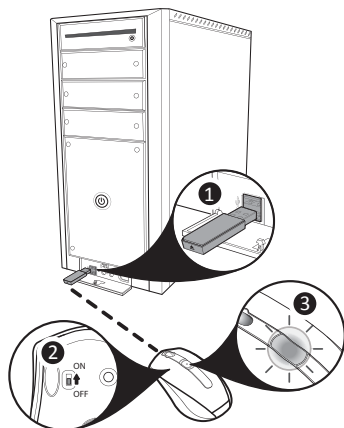


Designed by Icon 7 Inc.
Made in China

I

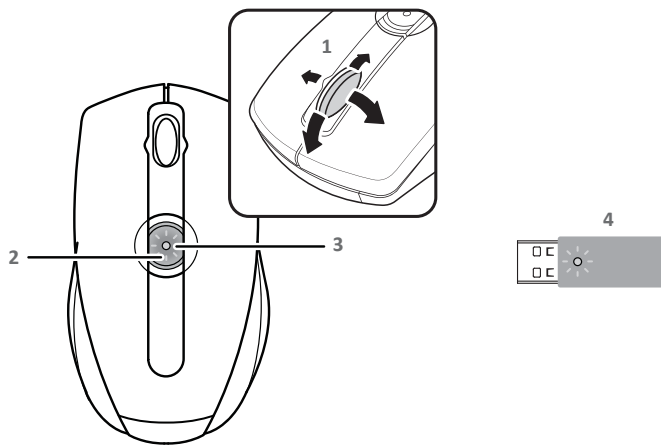


II



III





- EN 1. 4-way Scrolling
2. FastFind™
3. D500 LED
- Orange: Battery level normal
- Orange, blinking slowly: Battery level running low
- Orange, blinking rapidly: Battery level critically low
4. USB Receiver LED
- Green: Battery level normal
- Red: Low battery

- SP 1. Desplazamiento en 4 direcciones
2. FastFind™
3. LED D500
- Naranja: Carga normal de las pilas
- Naranja, con parpadeos lentos: Carga baja de las pilas
- Naranja, con parpadeos rápidos: Carga muy baja de las pilas
4. LED del receptor USB
- Verde: Carga normal de las pilas
- Rojo: Carga baja de las pilas

- PT 1. Rolagem de quatro direções
2. FastFind™
3. LED do D500
- Laranja: Nível normal das pilhas
- Laranja, piscando lentamente: Nível das pilhas baixo
- Laranja, piscando rapidamente: Nível das pilhas criticamente baixo
4. LED do receptor USB
- Verde : Nível normal da pilha
- Vermelho : Pilhas fracas

- IT 1. Scorrimento a 4 vie
2. FastFind™
3. LED D500
- Arancione: Batteria normale
- Arancione, lampeggiante lentamente: Batteria scarica
- Arancione, lampeggiante rapidamente: Batteria quasi esaurita
4. LED ricevitore USB
- Verde: Livello batteria normale
- Rosso: Batteria scarica

- DE 1. 4-Wege-Scrollen
2. Fast Find™
3. D500 LED
- Orange: Batterieladestand normal
- Orange, langsam blinkend: Batterieladestand lässt nach
- Orange, schnell blinkend: Batterieladestand erreicht eine kritische Grenze
4. USB- Empfänger- LED
- Grün: Batterieladestand normal
- Rot: Batteriestand niedrig

- RU 1. 4-сторонняя прокрутка
2. FastFind™
3. Индикатор D500
- Оранжевый: Нормальный уровень заряда батареи
- Редко мигает оранжевым: Низкий уровень заряда батареи
- Часто мигает оранжевым: Очень низкий уровень заряда батареи
4. Индикатор USB- приемника
- Зеленый: Нормальный уровень заряда батареи
- Красный: Низкий уровень заряда батареи

- FR 1. Déroulement quadri-directionnel
2. FastFind™
3. DEL D500
- Orange: Niveau des piles normal
- Orange, le voyant clignote lentement: Niveau faible des piles
- Orange, le voyant clignote rapidement: Niveau très faible des piles
4. DEL du récepteur USB
- Vert: Niveau des piles normal
- Rouge: Piles faibles

- CZ 1. 4směrné procházení
2. FastFind™
3. D500 LED
- Oranžová: Normální napětí baterie
- Oranžová, bliká pomalu: Napětí baterie se snižuje
- Oranžová, bliká rychle: Napětí baterie je kriticky nízké
4. Indikátor LED přijímače USB
- Zelená: Normální stav baterie
- Červená: Nízký stav baterie

- SK 1. 4-smerové posúvanie obrazu
2. FastFind™
3. D500 LED kontrolka
- Oranžová blikne raz : Napätie batérie je normálne
- Oranžová, bliká pomaly : Napätie batérie je nízke
- Oranžová, bliká rýchlo : Napätie batérie je kriticky nízke
4. LED kontrolka USB prijímača
- Zelená: batéria je v poriadku
- Červená: batéria je slabá

- HU 1. Négyirányú görgetőgomb
2. FastFind™
3. D500 LED
- Narancssárga: Elem töltésszintje normális
- Narancssárga, lassan villog: Az elem kezd lemerülni
- Narancssárga, gyorsan villog: Az elem csaknem kimerült
4. USB vevőkészülék LED
- Zöld: Elem töltésszintje normális
- Vörös: Gyenge töltésszint

EN To view the complete User's Manual and/or to install the driver, please refer to either the CD-Rom enclosed in the package, or go online to: www.icon7inc.com/support.aspx

SP Para visualizar el Manual de usuario completo y/o instalar el controlador, consulte el CD-ROM incluido en el embalaje o diríjase a: www.icon7inc.com/support.aspx

PT Para ver o Manual do usuário completo e/ou para instalar o driver, consulte o CD-ROM que acompanha o produto, ou visite: www.icon7inc.com/support.aspx

DE Um die gesamte Bedienungsanleitung zu lesen und/oder den Treiber zu installieren, sehen Sie bitte auf der mitgelieferten CD-ROM nach oder im Internet unter: www.icon7inc.com/support.aspx

FR Pour voir le Mode d'emploi complet et/ou pour installer le pilote, veuillez consulter le CD-ROM fourni dans le paquet, ou allez sur le site web: www.icon7inc.com/support.aspx

IT Per visualizzare per intero il manuale dell'utente e/o installare il driver, consultare il CD-ROM in dotazione o visitare online il sito: www.icon7inc.com/support.aspx

RU Для просмотра полного руководства пользователя и (или) установки драйвера см. либо входящий в комплект поставки компакт-диск, либо перейдите на веб-сайт: www.icon7inc.com/support.aspx

CZ Pokyny pro zobrazení celé uživatelské příručky a/nebo pro instalaci ovladače najdete na disku CD-ROM přiloženém v krabici nebo online na: www.icon7inc.com/support.aspx

SK Pre prezretie kompletného návodu na obsluhu a/alebo inštaláciu ovladača si pozrite buď CD-ROM priložený v balení, alebo navštívte internetovú stránku: www.icon7inc.com/support.aspx

SL Za ogled celotnega Priročnika za uporabo in/ali namestitve gonilnika, prosimo uporabite priloženi CD, ali pojdite na: www.icon7inc.com/support.aspx

PL W celu wyświetlenia całego podręcznika użytkownika i/lub instalacji sterownika należy odszukać w opakowaniu dysk CD-ROM lub przejść online pod adres: www.icon7inc.com/support.aspx

HU A teljes felhasználói kézikönyv megtekintéséhez és/vagy az illesztőprogram telepítéséhez tekintse meg a csomagban mellékel CD-ROM-ot, vagy látogassa meg a weboldalt: www.icon7inc.com/support.aspx

RO Pentru a vedea Manualul de utilizare complet și/sau pentru a instala driverul, consultați CD-ROM-ul inclus în pachet sau accesați online: www.icon7inc.com/support.aspx

AR لعرض دليل المستخدم المتكامل، يرجى الرجوع إلى القرص المدمج المرفق بالعبوة أو زيارة الموقع الإلكتروني: www.icon7inc.com/support.aspx

- SL 1. 4-smerno drsenje
2. FastFind™
3. D500 LED
- Oranžna : Normalna kapaciteta napolnjenosti baterije
- Oranžna, počasi utripa : Baterija bo kmalu prazna
- Oranžna, hitro utripa : Nivo baterije je kritičen
4. LED USB sprejemnika
- Zelena : Normalna kapaciteta baterije
- Rdeča : Nizka kapaciteta baterije

- RO 1. Defilare în 4 sensuri
2. FastFind™
3. LED D500
- Portocaliu : Nivel baterie normal
- Portocaliu, intermitent încet: Nivel baterie slabă
- Portocaliu, intermitent rapid: Nivel baterie critic
4. LED Receptor USB
- Verde: Nivel baterie normal
- Roșu: Baterie slabă

- PL 1. 4-kierunkowe przewijanie
2. FastFind™
3. Dioda D500
- Pomarańczowy: Poziom baterii normalny
- Pomarańczowy, migający powoli : Stabe baterie
- Pomarańczowy, migający szybko : Baterie prawie wyczerpane
4. Wyświetlacz USB
- Zielony : Poziom baterii normalny
- Czerwony : Słabe baterie

- AR 1. تتنقل رباعي الاتجاه
2. تقنية FastFind™
3. مؤشر D500
- برتقالي : مستوى طاقة البطارية عادي
- برتقالي، وميض بطيء : مستوى طاقة البطارية ينخفض
- برتقالي، وميض سريع : مستوى طاقة البطارية منخفض جداً
4. مؤشر مستقبل USB
- أخضر : مستوى طاقة البطارية عادي
- أحمر : مستوى طاقة البطارية منخفض